



TPO SERIES LED Tri-proof lamp

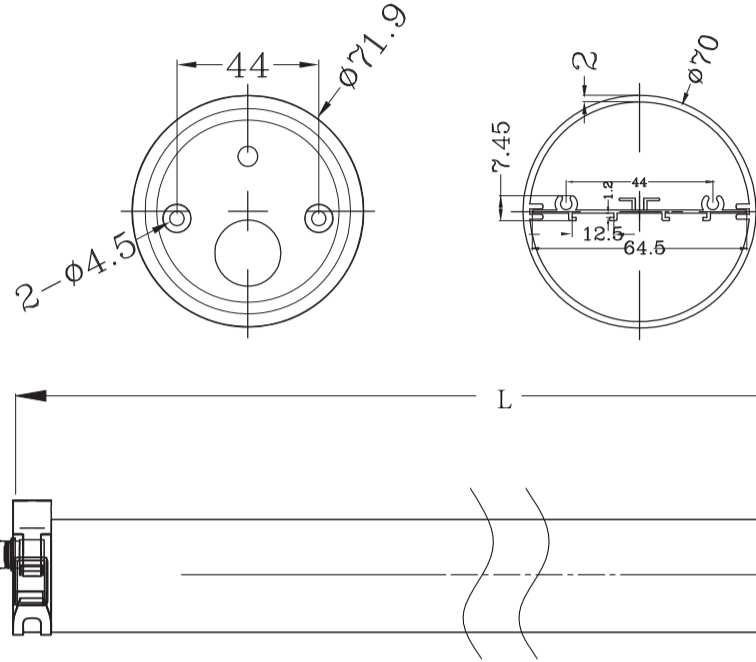
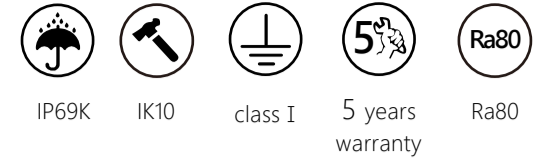
www.seekingled.com



145-155lm/w 20W/40W/60W 270°

TPO SERIES LED Tri-proof lamp is suitable for harsh environment cylindrical design, IP69K can withstand 1450psi high pressure washing. Clip bracket design makes installation more convenient, non-porous sealing design prevents corrosion, dust, dirt, insects, moisture and bacteria. Suitable for lighting in food factories, breeding factories, workshops, offices, cold storage, shopping malls, supermarkets, textile factories, anti-corrosion and other places.





Product size

| Item | Φ (mm) | L(mm) |
|-----------|-------------|-------|
| XJ-TPO20W | 71.9 | 600 |
| XJ-TPO40W | 71.9 | 1200 |
| XJ-TPO60W | 71.9 | 1500 |

Parameter

| Model NO. | Power (W) | Luminous flux 145-155lm/w |
|-----------|-----------|---------------------------|
| XJ-TPO20W | 20W | 2900-3100 |
| XJ-TPO40W | 40W | 5800-6200 |
| XJ-TPO60W | 60W | 8700-9300 |



270°

XJ - TPO 60W

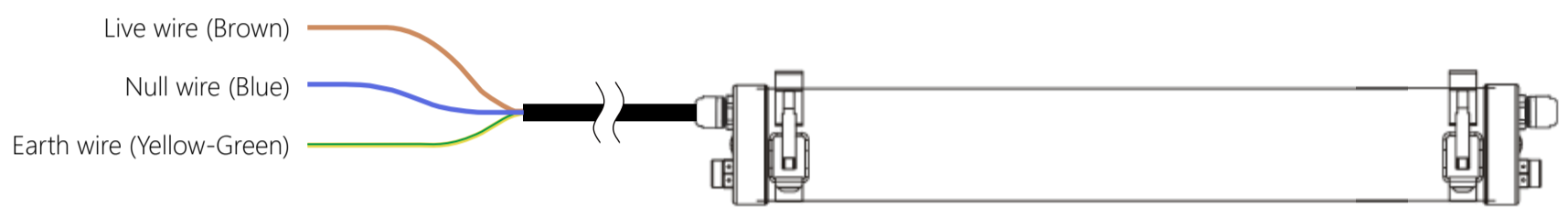
- Power Code: 20W/40W/60W
- product series
- Seeking LED-Lighting

| | |
|-----------------------|-------------------------------|
| AC Input : | 200-240V 50/60Hz |
| Brand of LED Driver : | TRIDONIC |
| Light Source : | 2835 |
| CRI Range : | Ra>80 |
| CCT Range : | WW(3000K) NW(4000K) CW(5700K) |
| Light Efficiency : | 145-155±5% Lm/W |
| Beam Angle : | 270° |
| Housing : | Aluminum Alloy+PC |
| Waterproof : | IP69k & IK10 |
| L80B20@25°C: | >100000H |
| PF: | ≥0.95 |
| THD: | <15% |
| Power Efficiency: | ≥0.9 |
| Certifications: | CE, CB |
| Warranty : | 5 Years |
| Light body color: | milky(RAL 9003) |

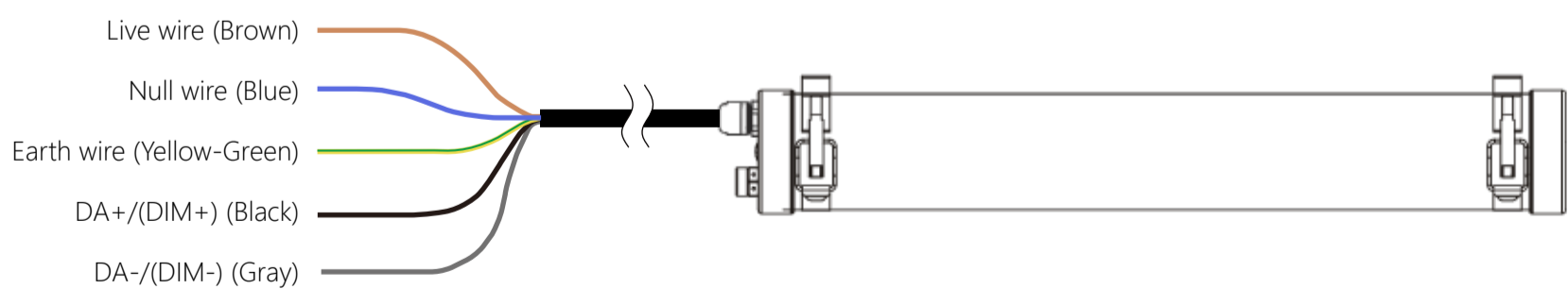


✳ Above lumens based on 4000K Ra:80

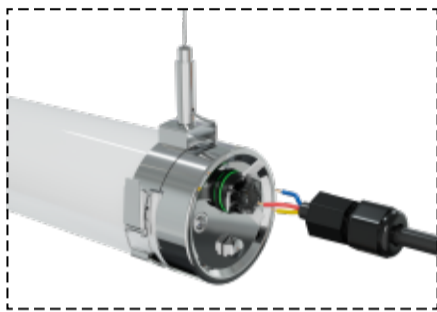
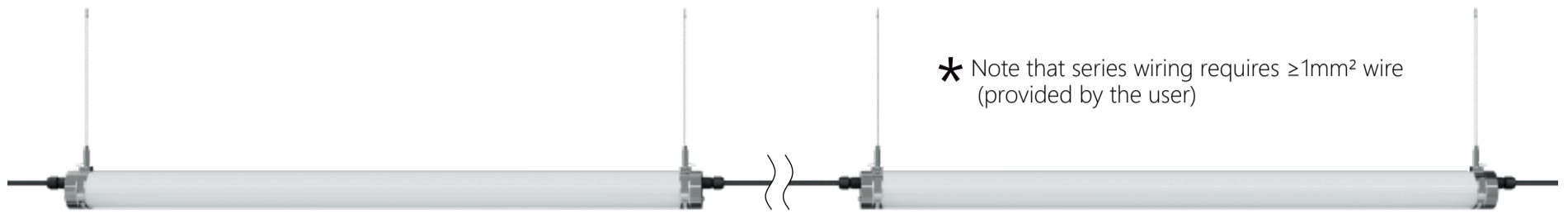
standard:



DALI/0-10V dimming:



Available Quantity in Series Connection:

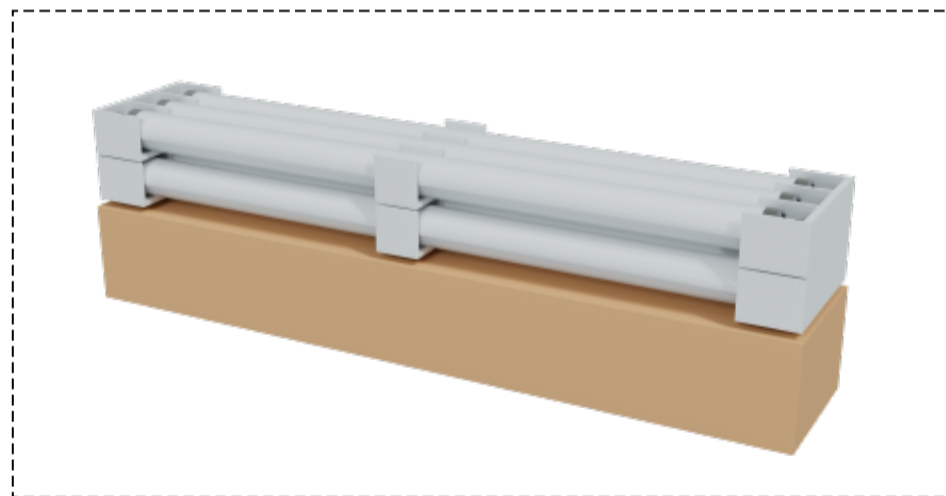


Tool-less terminal blocks

1. Cable requirements : $\geq 3 \times 1.0\text{mm}^2$
2. Solid cable-end
3. Wire stripping 10-12mm

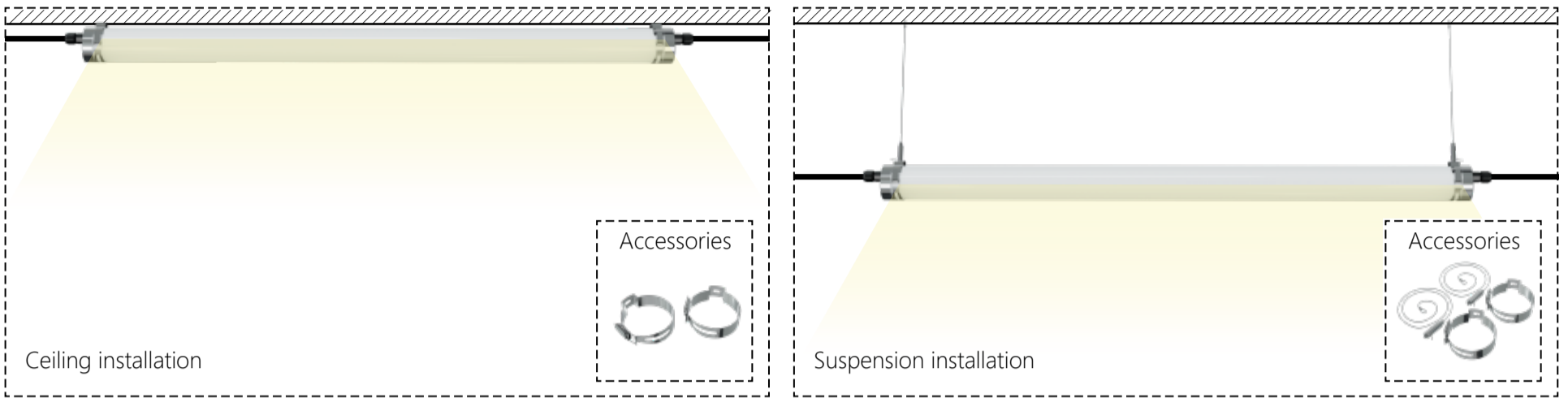
| Power (W) | Input Voltage (V) | Maximum Quantity Connecting in Series |
|-----------|-------------------|---------------------------------------|
| 20 | 220 | 50pcs |
| 40 | 220 | 25pcs |
| 60 | 220 | 16pcs |

Product Packaging :

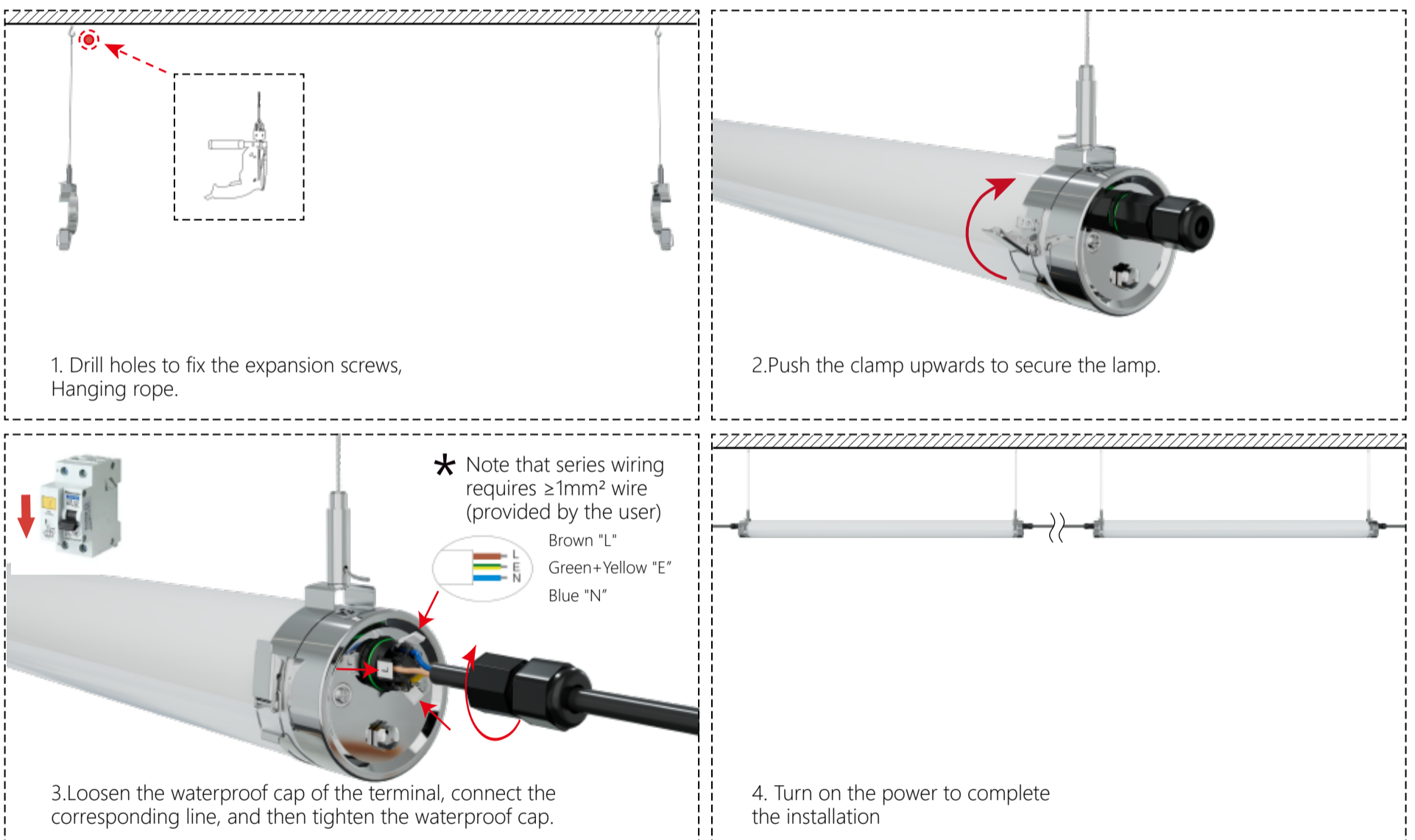


| Model | Qty | N.W.(kg) | G.W.(kg) | Meas(mm) |
|-----------|---------|----------|----------|--------------|
| XJ-TPO20W | 6PC/ctn | 1.5 | 10.1 | 800*286*204 |
| XJ-TPO40W | 6PC/ctn | 2 | 13.5 | 1400*286*204 |
| XJ-TPO60W | 6PC/ctn | 2.3 | 15.3 | 1700*286*204 |

Installation method:



Product Installation Instructions:



* Note : Please make sure the power off before operation, Installation must be performed by skilled electrician who are familiar with the requirements and proper installation methods of LED luminaire, in order to avoid damage or hazard;